

SLAB BOX

IT'S SIMPLE **ONE BOX**,
AND A **PERFECT FIT EVERY TIME!**





Established in 1978 Allbro is a South African company with more than 700 employees and has 22,000 sqm of production facility. Allbro supplies key components that are used in almost every locally made transformer. With the acquisition of ABB's South African enclosure operation (York) in 2011, Allbro also became a leading supplier of non-metallic enclosures to the industrial and residential contracting trade. Brands like York, Okari, Enlec, Utilec, PSO1 and PSO2 are well known in the South African market and are all solely manufactured by Allbro in South Africa. Local manufacture to international standards means that products are suited to the rigours of a tough local environment. Over the last 5 years Allbro has invested heavily into modern Non-metallic enclosure systems for international markets. This has been on a level unprecedented in South African history.

Enclosures



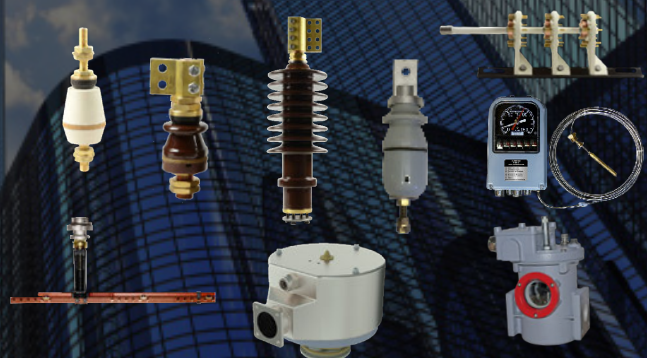
Switchboard Accessories



Insulators



Transformer Equipment

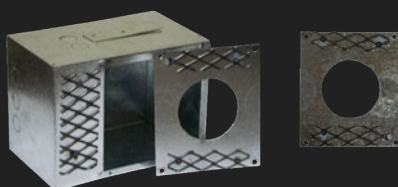




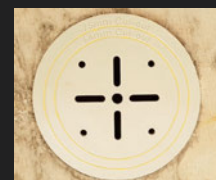
Traditional metal slab boxes currently in use in South Africa pose a varying number of complications when installing. Inconsistent knock outs, poor quality tack welds, difficult alignment process and inconsistent mesh/steel surfaces that can be difficult to plaster.

ALLBRO's new Slab Box solves these challenges whilst still offering the benefits of a GRP electrical enclosure. It will offer a single box with three diameters options, no predefined knock outs, simplified alignment, easy and tidy plastering.

- Metal boxes require separate specific cut outs to cater for the 64mm, 75mm & 85mm down lights generally used. With Slab Box, you will be able to achieve these diameters with a single box just by using an appropriately sized hole saw (sold separately).



Multiple metal cut-outs



Single cap achieves 85mm, 75mm and 64mm



Various & inconsistent knock-outs



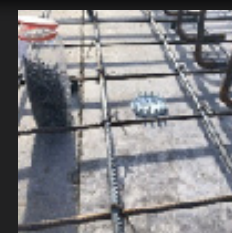
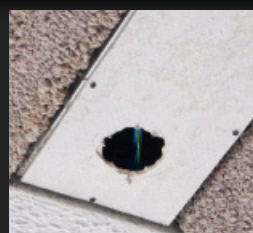
Custom conduit holes for perfect fit

- Predefined metal knock outs sometimes pose a unique challenge due to its poor quality and inconsistent gapping. This could allow concrete to seep into the box during the curing process.

- Perfect alignment of downlights also proves difficult to achieve. Slab Box's unique yet simple shutter mounting system promises accurate and consistent positioning.



Large cut-outs prove challenging to align

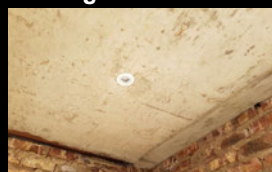
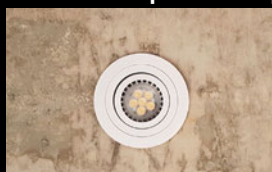


Shutter mount is simple to measure & mark for consistent alignment



Metal boxes require extra plastering to cover mesh pattern

- The traditional metal box requires a mesh grid to be welded onto edges to ensure adhesion of plaster. Slab Box's unique design addresses this ascetic issue of unappealing "grid" surface finishes by eliminating the need to plaster directly onto the box.



Slab box achieves perfect finish. Much less plaster can be used.



Optimum seal on lid ensuring zero concrete permeation



Made from GRP (Glass Reinforced Polyester)

Holesaw sold separately (R38.00 each)



No pre-defined conduit knock-outs (Conduit hole must be drilled above this line)



Allows for smooth, seamless plastering - No unsightly mesh finishes

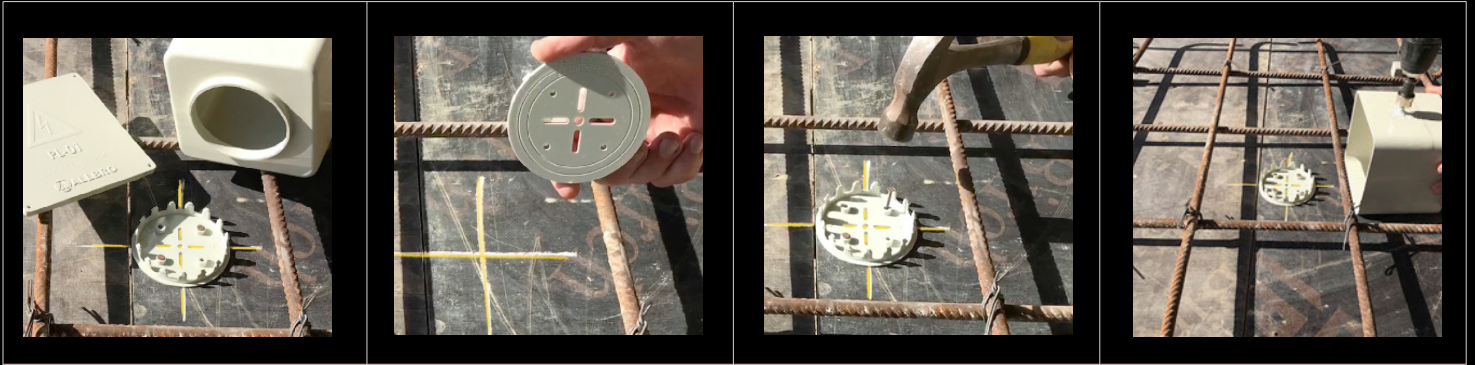


One box achieves multiple down light diameters



Protective cap - Sold Separately

The Process:



The Kit

Step 1: Mark it

Step 2: Mount it

Step 3: Drill it



Step 4: Clip it

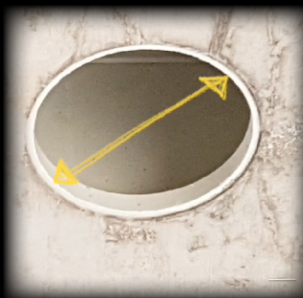
Step 5: Tie it

Pour concrete

The Result:



Select correct
downlight diameter



Cut-out per dimension



The perfect finish

- **NO** Pre-defined knock-outs
- **NO** Extra Plastering

- **NO** Multiple diameter boxes needed
- **NO** Difficulty aligning

CONTACT US

121, 13th Avenue
Anderbolt Ext 32
Boksburg
1459

Tel: +27 11 894-8341
Fax: +27 11 918 1072
Email: sales@allbro.com
www.allbro.com



Copyright © 2020 Allbro
All rights reserved