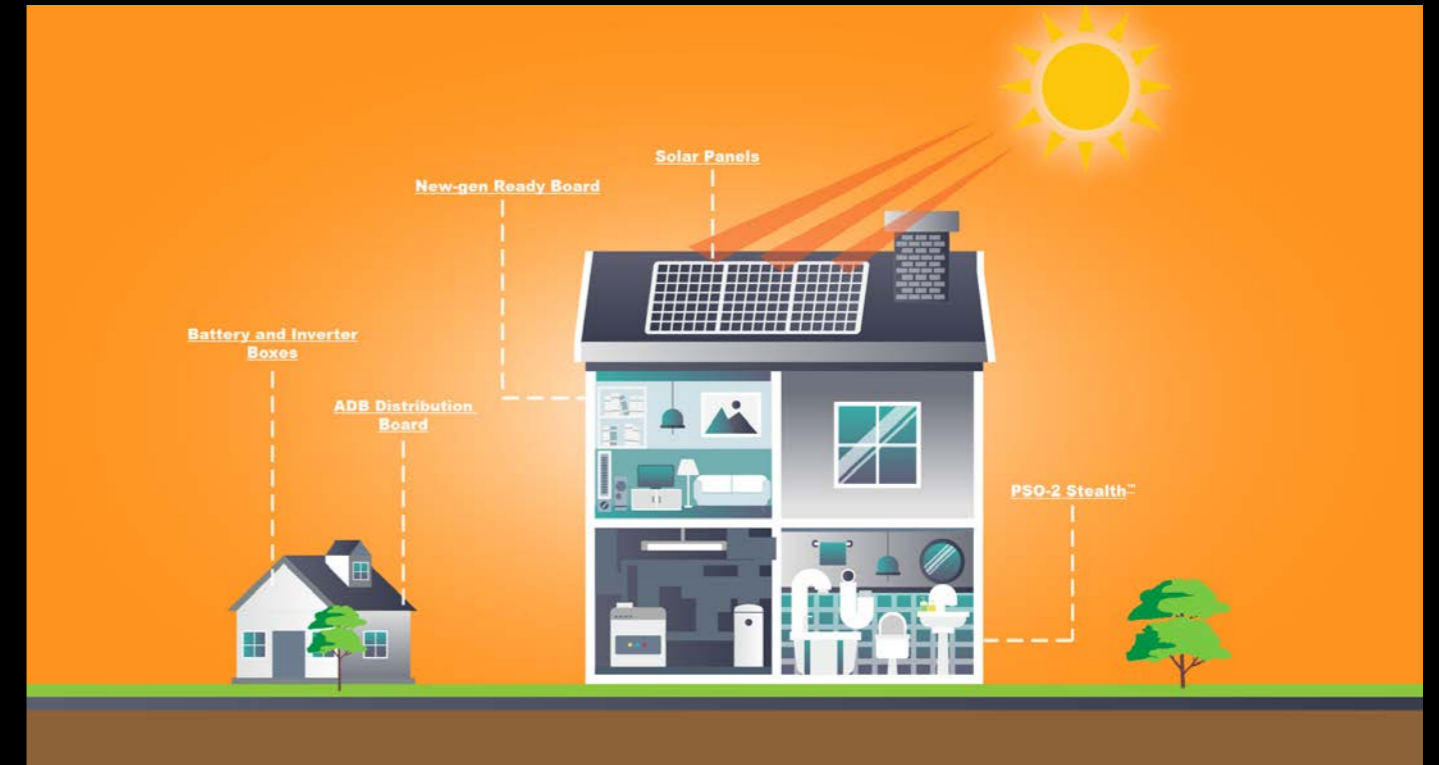




PV SOLAR SOLUTIONS

 **ALLBRO**



DISTRIBUTION	pg 15,16
FUSED COMBINER BOXES	pg 14
NON-FUSED COMBINER BOXES	pg 15
BATTERY BOXES	pg 4
INVERTER BOXES	pg 4
JUNCTION BOXES	pg 12
WEATHERPROOF SOCKET OUTLETS	pg 18
CONTROL BOXES	pg 12
FUSES AND FUSE HOLDERS	pg 22
ISOLATOR BOXES	pg 20

Internal hinges.
(Cannot be compromised from outside)

Integrated "rain canopy"

Multi-angle mounting brackets

Flame Retardant

IP Level: 66

Durable GRP Material

Flush mounted window option

Quarter Turn Lock

Can accommodate DB Kit/ Inner Door.
* Allbrox 4 Deep and 6 Deep can not accommodate DB Kit

Material	SMC (Sheet Moulding Compound), PC for window			
Operating Temperature	-50° C to + 200° C			
Glow Wire Capability / Flammability	960° / UL94 V0			
Expected UV Life (Direct Exposure)	25 years +			
IP Level	IP66			
IK Level	IK10			
Security Level	1	2	3	4

*** PLEASE NOTE:**

- Allbrox® is not suitable to install on back (Face Up)
- Allbrox® 3-6D must be installed in portrait orientation ONLY.



ALLBROX 8 PORTRAIT

ALLBROX 7.1 PORTRAIT

ALLBROX 6.5 PORTRAIT

ALLBROX 6 DEEP

ALLBROX 6

ALLBROX 5

ALLBROX 4 DEEP

ALLBROX 4

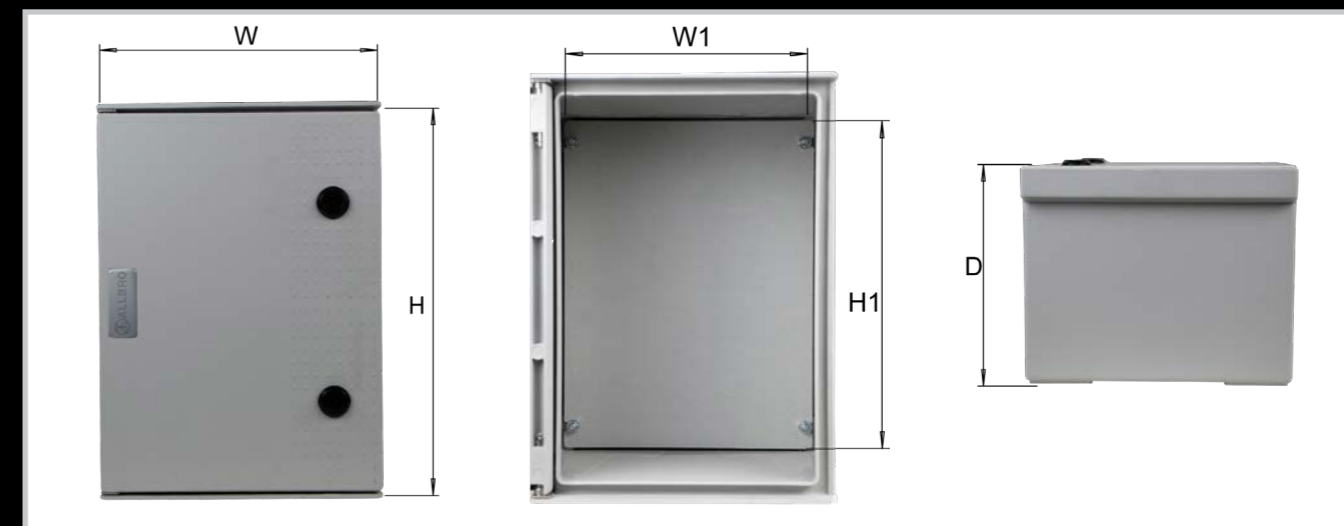
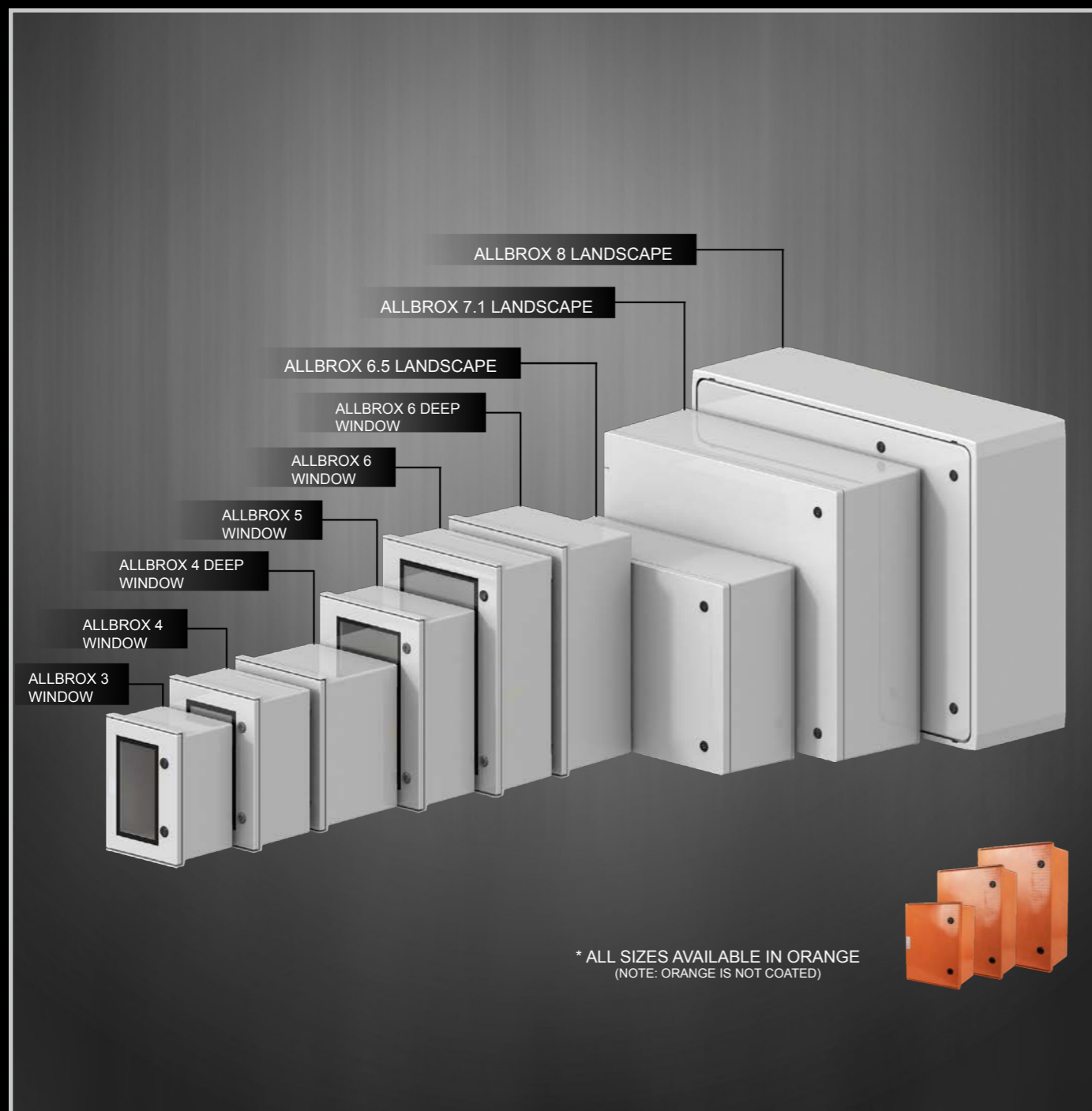
ALLBROX 3

* ALL SIZES AVAILABLE IN ORANGE
(NOTE: ORANGE IS NOT COATED)

Material	SMC (Sheet Moulding Compound), PC for window			
Operating Temperature	-50° C to + 200° C			
Glow Wire Capability / Flammability	960° / UL94 V0			
Expected UV Life (Direct Exposure)	25 years +			
IP Level	IP66			
IK Level	IK10			
Security Level	1	2	3	4

*** PLEASE NOTE:**

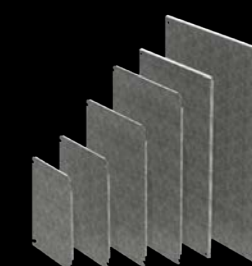
- Allbrox® is not suitable to install on back (Face Up)
- Allbrox® 3-6D must be installed in portrait orientation ONLY.



Part Number (Grey)	Part Number (Orange)	Description	H (mm)	W (mm)	D (mm)	W1 (mm)	H1 (mm)
ALL-003	ALL-003/O	Allbrox 3 with SMC Device plate	350	250	200	212	317
ALL-004	ALL-004/O	Allbrox 4 with SMC Device plate	400	300	200	262	364
ALL-004/D	ALL-004/D/O	Allbrox 4 Deep with SMC Device plate	400	300	273	262	364
ALL-005	ALL-005/O	Allbrox 5 with SMC Device plate	500	350	200	312	467
ALL-006	ALL-006/O	Allbrox 6 with SMC Device plate	600	400	200	362	567
ALL-006/D	ALL-006/D/O	Allbrox 6 Deep with SMC Device plate	600	400	250	362	567
ALL-006_5-L	ALL-006_5-L/O	Allbrox 6.5 Landscape with SMC Device plate	500	700	246	619	419
ALL-006_5-P	ALL-006_5-P/O	Allbrox 6.5 Portrait with SMC Device plate	700	500	246	419	619
ALL-006_5-L/D	ALL-006_5-L/D/O	Allbrox 6.5 Landscape Deep with SMC Device plate	500	700	366	619	419
ALL-006_5-P/D	ALL-006_5-P/D/O	Allbrox 6.5 Portrait Deep with SMC Device plate	700	500	366	419	619
ALL-007_1-P	ALL-007_1-P/O	Allbrox 7.1 Portrait with SMC Device plate	828	710	287	634	754
ALL-007_1-L	ALL-007_1-L/O	Allbrox 7.1 Landscape with SMC Device plate	710	828	287	754	634
ALL-008-P	ALL-008-P/O	Allbrox 8 Portrait with SMC Device plate	1000	800	320	710	910
ALL-008-L	ALL-008-L/O	Allbrox 8 Landscape SMC Device plate	800	1000	320	910	710

Allbrox Galvanised Steel Device Plate

Part Number	Description	H (mm)	W (mm)	Thickness
ALL-M/SMPLATE-3	ALL Mounting Steel Plate No.3	311	238	1.6
ALL-M/SMPLATE-4	ALL Mounting Steel Plate No.4	361	288	1.6
ALL-M/SMPLATE-5	ALL Mounting Steel Plate No.5	461	338	1.6
ALL-M/SMPLATE-6	ALL Mounting Steel Plate No.6	554	380	1.6
ALL-M/SMPLATE-6_5	ALL Mounting Steel Plate No.6_5	590,7	390,7	2
ALL-M/SMPLATE-7	ALL Mounting Steel Plate No.7	605	532,7	2



Optional lock selection:



Part Number	H (mm)	L (mm)
22_1_026P/DB	36	26

Standard lock that is supplied with each Allbrox 3-6



Part Number	H (mm)	L (mm)
22_3_18B/B6_25	25	45

- Suitable for Allbrox 3-6.
- Allbrox 6.5 - 8, add /CAM36 at the end of the part number



Part Number	H (mm)	L (mm)
22_3_25W/P	25	45

- Suitable for Allbrox 3-6.
- Allbrox 6.5 - 8, add /CAM36 at the end of the part number



Part Number	H (mm)	L (mm)
22_3_25W/K	25	45

- Suitable for Allbrox 3-6.
- Allbrox 6.5 - 8, add /CAM36 at the end of the part number

Distribution Board Kit

ALLBROX® 4-6

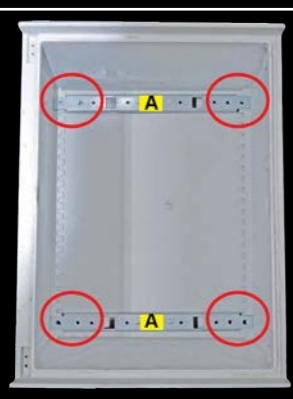


Allbrox® Distribution Board Kit

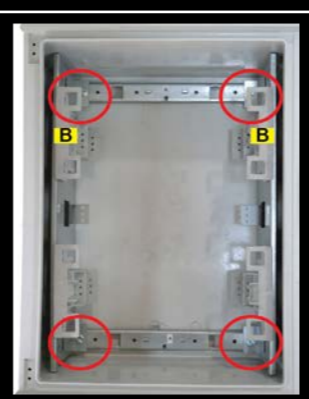
Part Number	Description	No. of Rows	MCB's Per Row	No. of Neutral Bars	No. of Earth Bars
ALL-004/DBK-A	Allbrox 4 Distribution Board Kit Assembled	2	10	2x (14 way)	2x (12 way)
ALL-005/DBK-A	Allbrox 5 Distribution Board Kit Assembled	3	13	4x (14 way)	4x (12 way)
ALL-006/DBK-A	Allbrox 6 Distribution Board Kit Assembled	4	15	5x (15 way)	2x (18 way) + 2x (12 way)

Allbrox® Distribution Board Kit Assembly

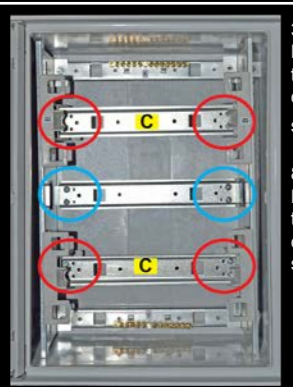
1) Remove device plate from the base. Leave the 4 x M6 nuts in place for fixing the mounting rails in place. Fit mounting rails (A) as shown using the 4 x M6 x 12 CH EG screws and M6 washers. Ensure that the bigger space between the hole and end of the mounting rail is fitted toward the hinge side of the box



2) Fit the steel side plates with the plastic supports (B) onto the mounting rails (A) using the 4 x M6 x 12CH EG screws and M6 washers as shown.



3) Fit the steel din rails (C), for breakers, into the plastic supports using 2 x 3.5 x 12 Panpozi thread cutter screws on each end as shown. Fit the steel din rail, for neutral bar, upside down using 2 x 8 x 9.5 thread cutter screws on each end as shown.



3.5 x 12 Panpozi thread cutter screws
8 x 9.5 Panpozi thread cutter screws

4) Clip the plastic Fascia plates (D) into the plastic supports as shown.

Product	No. Fascia Plates
ALLBROX 4	2
ALLBROX 5	3
ALLBROX 6	4



Inner Doors

ALLBROX® 4-6



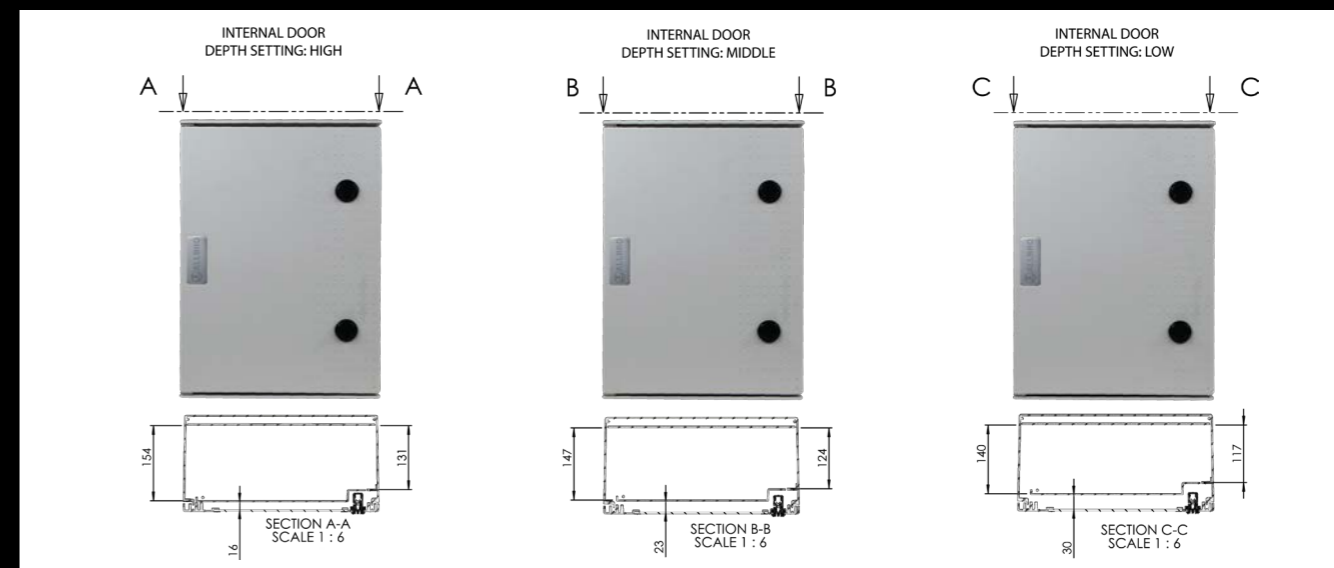
Allbrox® Inner Door

Part Number	Description
ALL-004/IN/DOOR	Allbrox 4 Inner Door
ALL-005/IN/DOOR	Allbrox 5 Inner Door
ALL-006/IN/DOOR	Allbrox 6 Inner Door

Allbrox® with PC Window

Part Number	Description
ALL-003/CLEARPC	Allbrox 3 with clear Polycarbonate window
ALL-004/CLEARPC	Allbrox 4 with clear Polycarbonate window
ALL-005/CLEARPC	Allbrox 5 with clear Polycarbonate window
ALL-006/CLEARPC	Allbrox 6 with clear Polycarbonate window

Allbrox® Inner Door Fitting Options



1) To remove or place the inner door in an Allbrox® simply pull the two hinge pins as indicated towards each other.

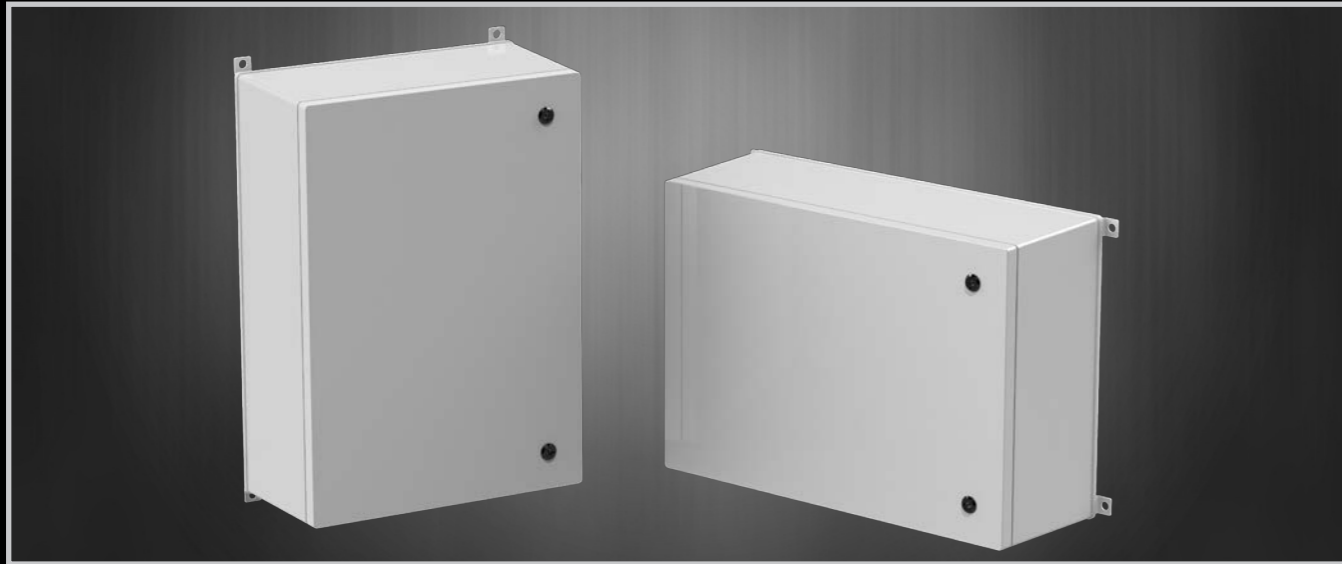


2.1) To remove the door, complete step 1 and pull the inner door towards yourself.

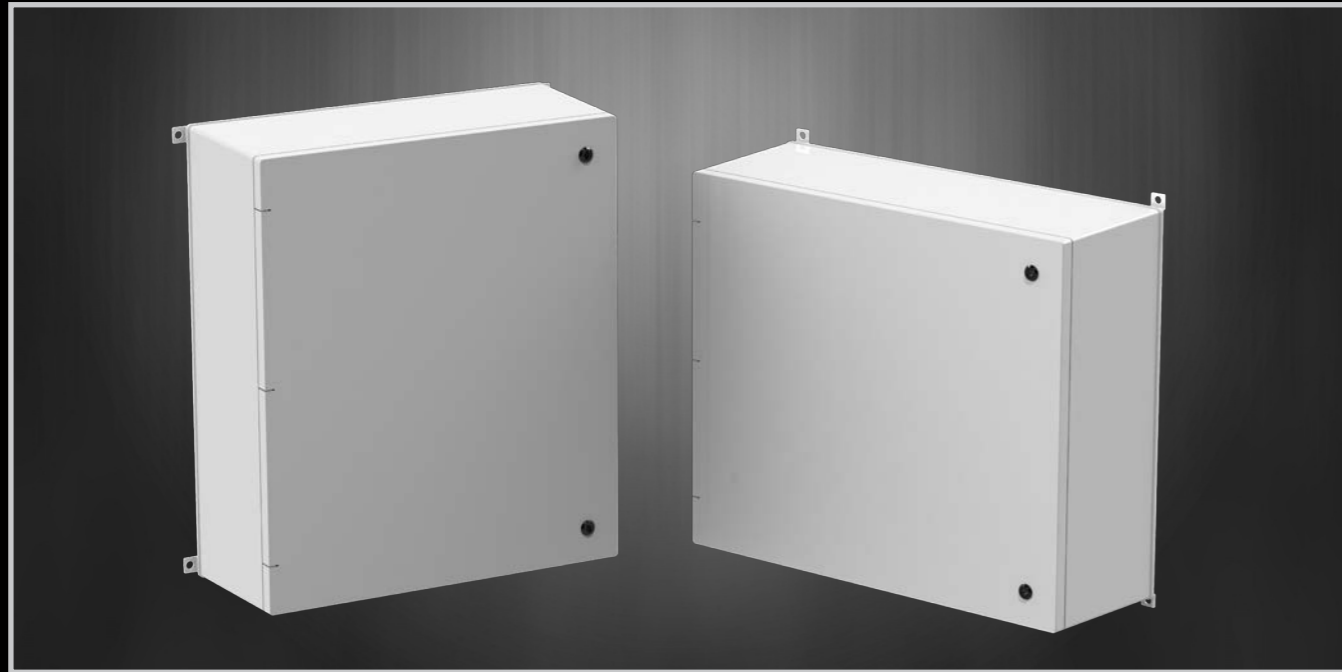
2.2) To place the inner door into the Allbrox® complete step 1 and let the hinge pins go once the pins are in-line with the hinge sleeve.

* Please note that the construction of the 6.5 and 7.1 sizes differs from the smaller sizes (3-6D)

ALLBROX® 6.5



ALLBROX® 7.1



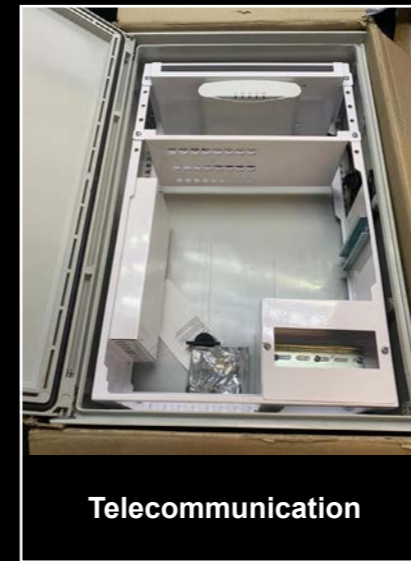
Inverter



Battery Boxes



**Residential PV Solar
Combiner**



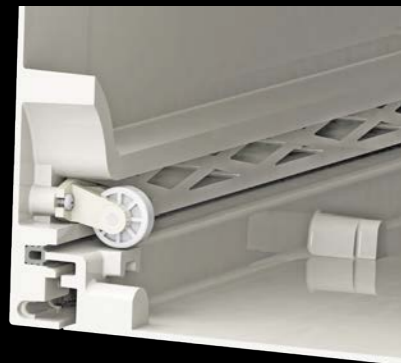
Telecommunication



**Residential PV Solar
Combiner**



**Wireless
Communications**



Door locator



Extra strength lid



Easily Removable door



**Combiner Boxes
for PV systems**



Distribution Board

GRP Material
(Proven to lasts decades in the African sun)

External mounting feet
(Separate Accessory)

Halogen Free

Halogen Free

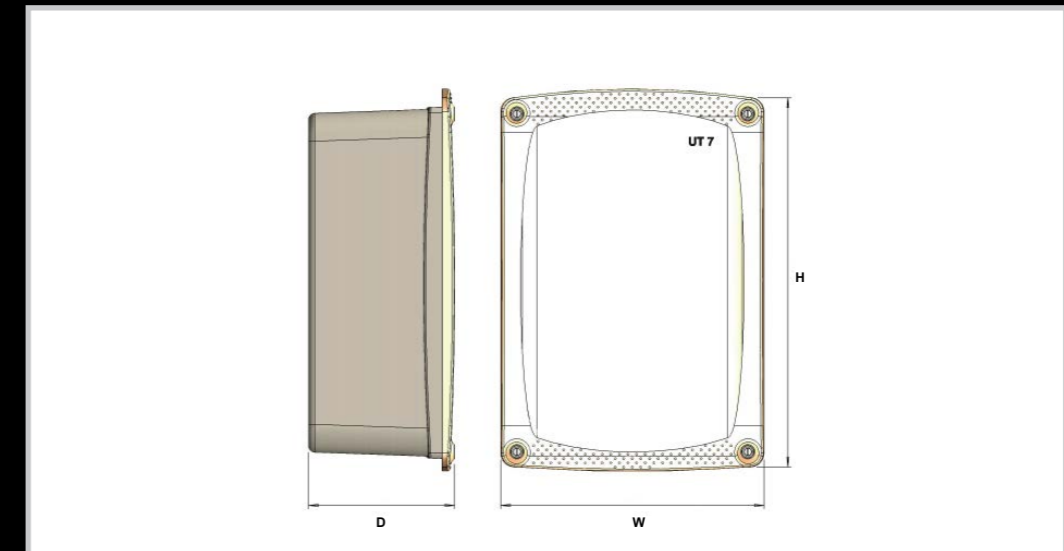
11 Different sizes

Flame Retardant

**Slide Lid (IP 54)
Screw Lid (IP 65)**

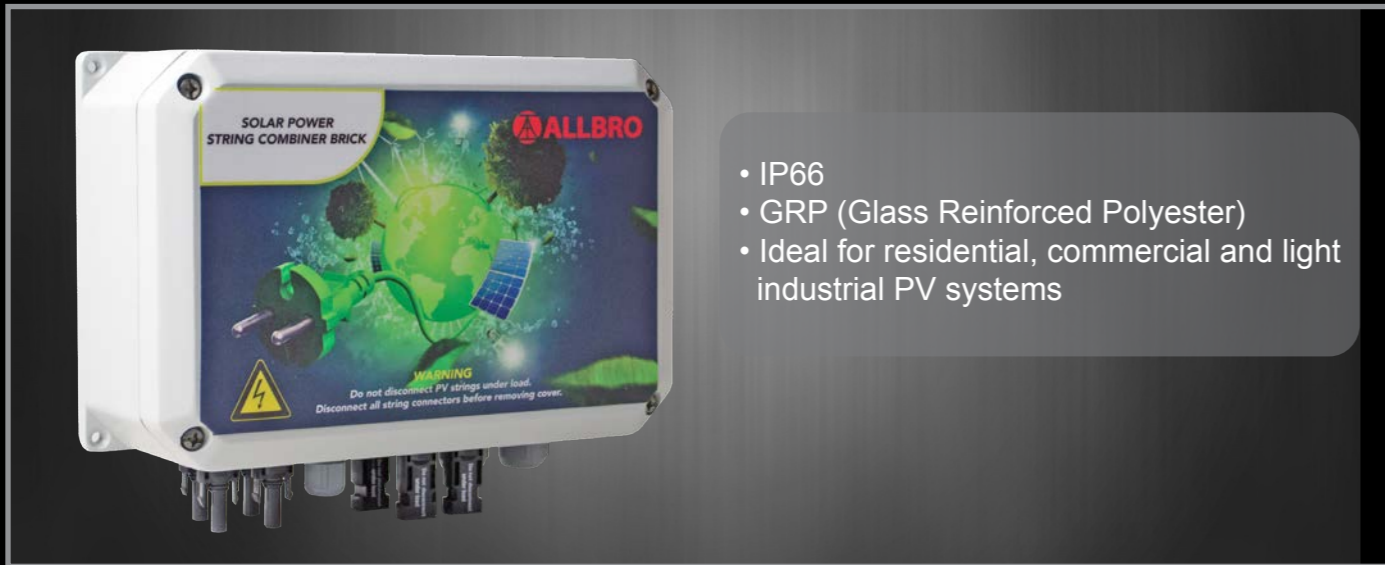


Note: Why slide lid? No gasket is used, so less chance of deterioration over extended use. Lifespan of IP level is increased.



	Internal Dimensions (mm)			External Dimensions (mm)			Screw Lid IP65	Slide Lid IP54	Qty per box	Device Plate Sold Separately
	H1	W1	D1	H	W	D	Part Number	Part Number		Part Number
UT4	210	160	90	253	194	100	040-656	040-716	8	DEV-UT4
UT4 -D	211	160	180	253	194	186	040-753	040-761	6	DEV-UT4
UT5	210	210	125	257	246	136	040-657	040-717	6	DEV-UT5





- IP66
- GRP (Glass Reinforced Polyester)
- Ideal for residential, commercial and light industrial PV systems

Part Number	Description	H (mm)	W (mm)	D (mm)
040-991	2 String Combiner with Surge Arrester	261	181	104
040-990	3 String Combiner with Surge Arrester	261	181	104
040-924	4 String Combiner with Surge Arrester	261	181	104
040-925	4 String Combiner without Surge Arrester	261	181	104



Part Number	Description	External Dimensions (mm)			Bolt size	No. of termination points	Copper busbar size		
		H (mm)	W (mm)	D (mm)			H (mm)	W (mm)	D (mm)
060-552	Non-Fused Combiner Box (Small)	160	260	95	M8	10	260	30	
060-553	Non-Fused Combiner Box (Medium)	160	360	95	M8	15	360	30	
060-554	Non-Fused Combiner Box (Large)	160	560	95	M8	23	560	30	

FUSE HOLDER
(Positive and negative poles) for incoming current

- PV fuses
- Fuse rating: 15A
- Finger safe fuse holders

16mm Outgoing Terminal

SPD
Class I & II Surge arrester for DC generation circuits

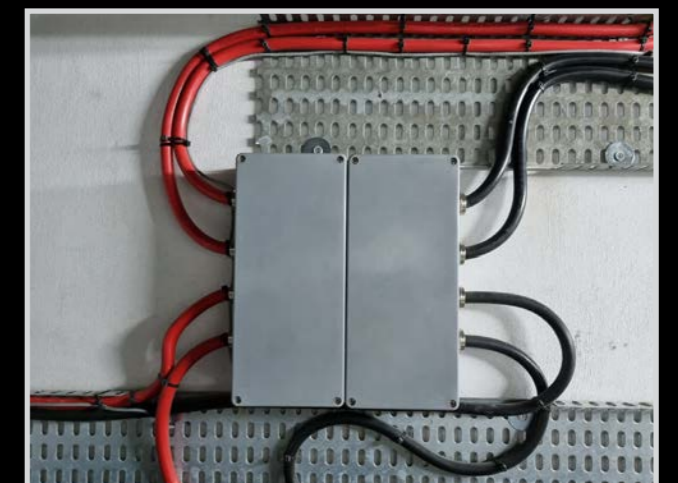
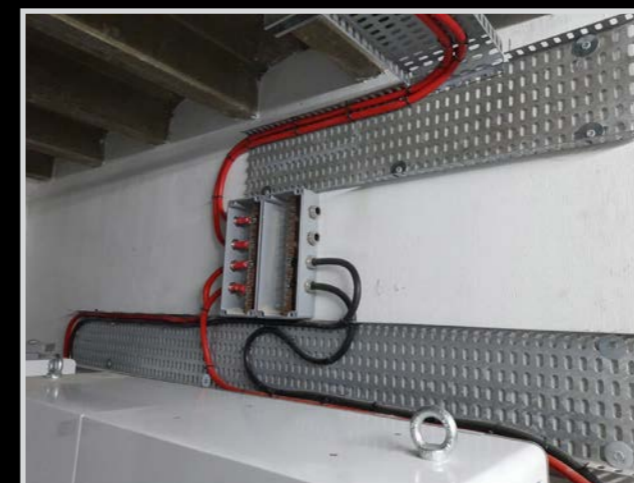
16mm Earth Terminal

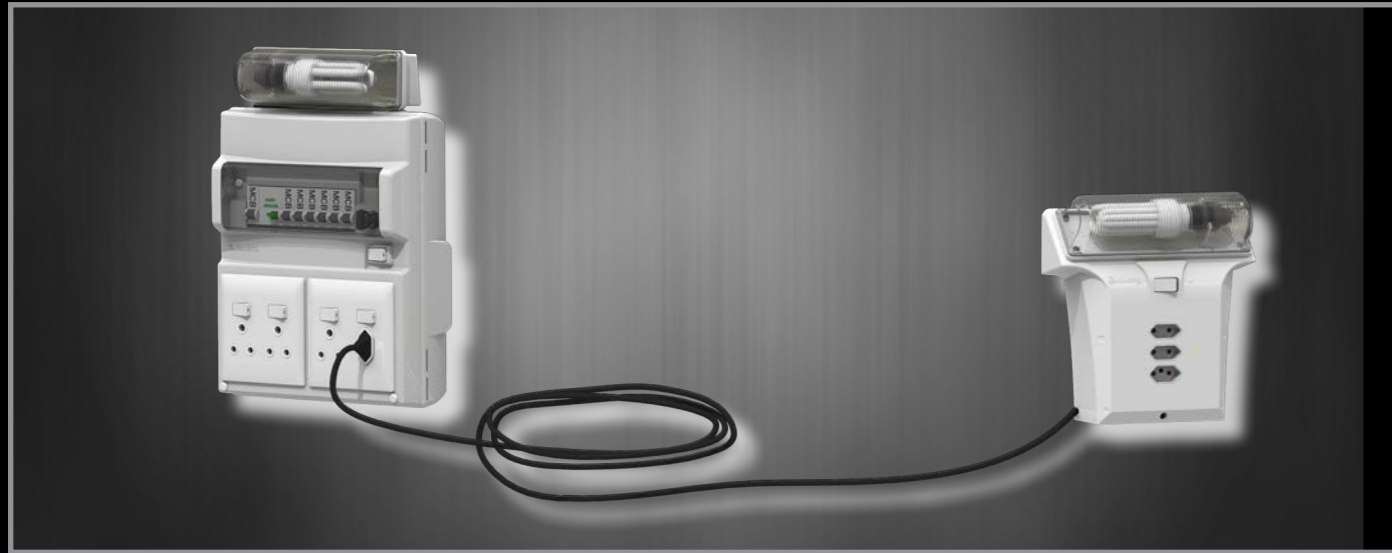
Robust Enclosure

INPUTS
MC4 Connectors IP66

* Above configuration is of the 4 string version

- IP Level 68
- M8 holes drilled and tapped 24mm apart
- Included in each unit:
 - M8 12mm Stainless steel bolts
 - M8 Stainless steel spring washers
 - M8 Stainless steel flat washers
 - 1x Drilling Template



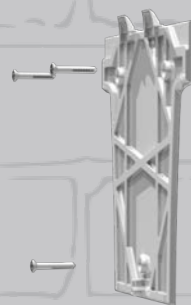


Part Number	Earth Leakage	MCB'S	No of 3 Pin Switched Socket Outlets	Bulkhead Light Fitting with Switch
RBNGC00ZF0E22	63A	2 X 20A	3	1
RBNG000ZF0E22	63A	2 X 20A	3	-

Part Number	Description	H (mm)	W (mm)	D(mm)	Cable Length
040-959	Room Extender Complete	257	240	83	2.7m
040-960	Room Extender Complete	257	240	83	6.7m
040-961	Room Extender Complete	257	240	83	10.7m
P/S060	Plug in Adaptor 2 x 16A / 6A Slimline	53	50	38	-

Room Extender Mounting System

1) Mount the mounting plate to the wall using 3x6mm screw/plug.



3) Cable can be spooled at the back of the Room Extender to keep cable neat and tidy



4) Plug the first unit into the New Gen ready board



5) Repeat steps 1 and 2 and connect the second unit into the first unit as shown below



Material	DMC (Dough Moulding Compound)
Operating Temperature	-50° C to + 200° C
Glow Wire Capability / Flammability	960° / UL94 V0
Expected UV Life (Direct Exposure)	GRP Flap 25 years + , Plastic Flap
IP Level	IP66
Security Level	Level 1 without pad-lock and Level 3 with pad-lock



Part Number	Description	H (mm)	W (mm)	D (mm)
040-965	8 Way Surface Din ADB GRP Flap	216	266	111
040-980	8 Way Surface Din ADB Plastic Flap	216	266	111
040-981	8 Way Flush Din ADB GRP Flap	216	266	111
040-968	8 Way Flush Din ADB Plastic Flap	216	266	111
040-982	8 Way Surface Samite ADB GRP Flap	216	266	111
040-984	8 Way Surface Samite ADB Plastic Flap	216	266	111
040-983	8 Way Flush Samite ADB GRP Flap	216	266	111
040-985	8 Way Flush Samite ADB Plastic Flap	216	266	111



Pad-lockable

ADB- Distribution Boards fits pad-lock size 262, *Size may vary according to make.



Part Number	Description	H (mm)	W (mm)	D (mm)
040-607	PSO-1 Stealth™ with GRP flap	176	132	94
040-608	PSO-1 Stealth™ with PC flap	176	132	94

Note:

- Plastic flap is not suitable for areas with direct sunlight.
- PSO-1 Stealth comes fitted with an Allbro socket.

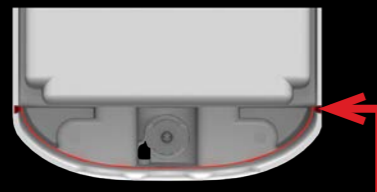
- **Flush/Surface Mounted**
- **Easy & Simple to install**
- **Available with Plastic/GRP flap**
- **Pad-lockable**

Installation:

Flush Mounted:



Cut the PSO-1 Stealth™ on the provided cut lines



Cut the PSO-2 Stealth™ on the provided cut lines



Once optional cut-section is removed, PSO-1 Stealth™ / PSO-2 Stealth™ fits between two bricks making installation simple and easy



Stealth range fits pad-lock size 262.
*Size may vary according to make.

Surface Mounted:

***NO CUTTING REQUIRED FOR SURFACE MOUNTING**



Place the PSO-1 Stealth™ / PSO-2 Stealth™ in the desired area and fix on wall using 6mm Nail in anchor screws. This modern weatherproof plugbox leaves you with a modern finish PLUS all the benefits of the original plug box you know and have trusted for 40 years

Material	DMC (Dough Moulding Compound)
Operating Temperature	-50° C to + 200° C
Glow Wire Capability / Flammability	960° / UL94 V0
Expected UV Life (Direct Exposure)	GRP Flap 25 years + , Plastic Flap 3 - 5 years exposed
IP Level	IP66 with/without cable
Security Level	Level 1 without pad-lock and Level 3 with pad-lock



Part Number	Description	H (mm)	W (mm)	D (mm)
040-955	PSO-2 Stealth™ GRP Flap	208,5	167	107,5
040-954	PSO-2 Stealth™ PC Blue Flap	208,5	167	107,5
040-992	PSO-2 Stealth™ PC Smokey Black Flap	208,5	167	107,5

Note:

Plastic flap is not suitable for areas with direct sunlight.
PSO-2 Stealth™ is supplied without socket.

The PSO-2 Stealth™ is the latest edition to the PSO-Stealth™ family. The PSO-2 Stealth™ has all the features and benefits of the PSO-1 Stealth™ with the addition key features that makes this weatherproof socket outlet box a must have!

The additional features of PSO2-Stealth™:

- PSO-2 Stealth™ can be fitted with most 4x4 sockets in the market.
- PSO-2 Stealth™ is IP66 with cable.

- **Fully Waterproof (IP66)**
- **Flush/Surface Mounted**
- **Easy & Simple to install**
- **Available with Plastic/GRP flap**
- **Pad-lockable**



Pad-lockable
Stealth range fits pad-lock size 262.
*Size may vary according to make.



Material	DMC (Dough Moulding Compound)
Operating Temperature	-50° C to + 200° C
Glow Wire Capability / Flammability	960° / UL94 V0
Expected UV Life (Direct Exposure)	GRP Flap 25 years + , Plastic Flap 3 - 5 years exposed
IP Level	IP66
Security Level	Level 1 without pad-lock and Level 3 with pad-lock

Material	SMC (Sheet Moulding Compound)			
Operating Temperature	-50° C to - 200° C			
Glow Wire Capability / Flammability	960° / UL94 V0			
Expected UV Life (Direct Exposure)	25 years +			
IP Level	IP66			
IK Level	IK10			
Security Level	1	2	3	4

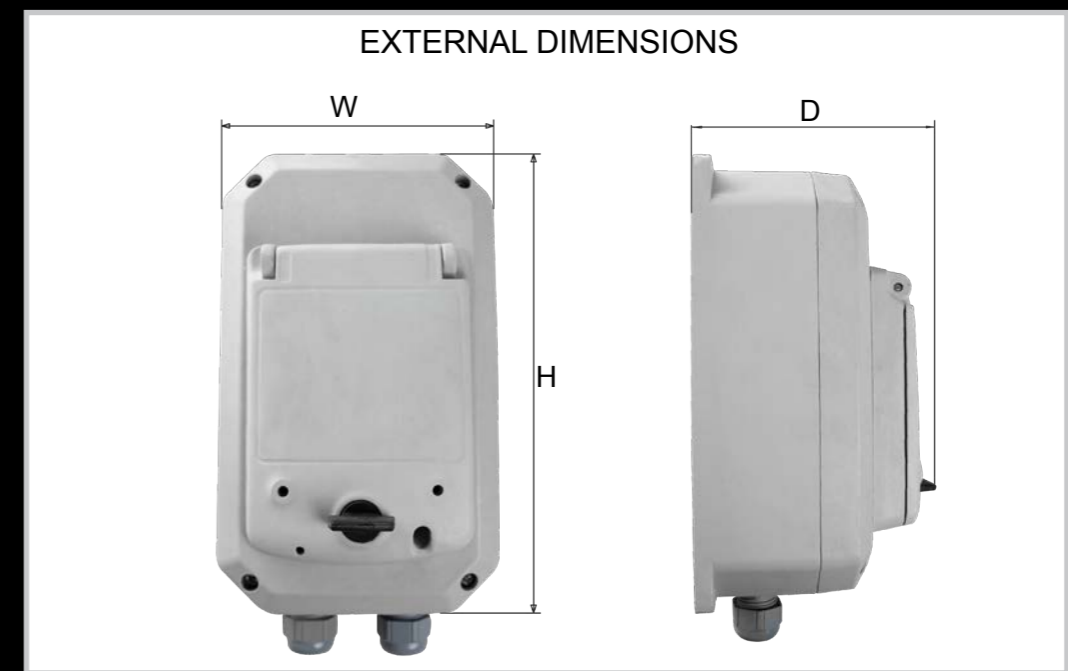


Part Number	Description	H (mm)	W (mm)	D (mm)
040-972	Stealth ISO with GRP Flap	176	132	94
040-973	Stealth ISO with PC Flap	176	132	94

- Fully Waterproof (IP66)
- Flush/Surface Mounted
- Available with Plastic/GRP flap
- Pad-lockable

Information on Isolator Switch:

- Product Rating: 25A, 250V AC
- Icw: 300A/1s, Icm: 1000A



Part Number	Description	H (mm)	W (mm)	D (mm)
060-601	AllRobust™ 201208 GRP Snapflap with Rotary Isolator Switch	205	125	80



Part Number	Description
018-045	Fuse Holder 10x38 (1000V DC)
018-056	Fuse Holder 10x85 (1500V DC)
018-067	10A (10x38) Fuse (1000V DC)
018-044	15A (10x38) Fuse (1000V DC)
018-062	20A (10x38) Fuse (1000V DC)
018-055	15A (10x85) Fuse (1500V DC)



Technical Information APV-30 Series Fuse Holder & Fuse Links:

- Fuse Holder Size: 80x18x61mm
- Rated Voltage: 1000Vdc (30A)
- Rated Current: ≤ 32A
- Breaking Capacity: 20kA
- Class of Operation: gPV
- Working Temperature: -40°C+90°C
- Fuse Size: 10x38mm
- Rated Voltage: 1000Vdc (2 to 30A)
- Rated Current: 2 to 30A
- Breaking Capacity: 20kA
- Class of Operation: gPV
- Minimum interrupting rating: 2 x I_n
- Time constant: 1-3 ms



Technical Information APV-30L Series Fuse Holder & Fuse Links:

- Fuse Holder Size: 130.3 x 19.5 x 68.4mm
- Rated Voltage: 1500Vdc (30A)
- Rated Current: ≤ 32A
- Breaking Capacity: 20kA
- Class of Operation: gPV
- Working Temperature: -40°C+90°C
- Fuse Size: 10x85mm
- Rated Voltage: 1500Vdc (2 to 30A)
- Rated Current: 2 to 30A
- Breaking Capacity: 20kA
- Class of Operation: gPV
- Minimum interrupting rating: 2 x I_n
- Time constant: 1-3 ms



CONTACT US

**121, 13th Avenue
Anderbolt Ext 32
Boksburg
1459**

**Tel: +27 11 894-8341
Fax: +27 11 918 1072
Email: sales@allbro.com
www.allbro.com**